

High Performance, Single Stage, Solenoid Operated Spool Valves

Direct Acting Directional Valves

WE6/WE10 Style Valves

4-way 2/3-position, and 3-way 2-position Valves

Features:

- Size NG6/CETOP 3 and NG10/CETOP 5
- Operating pressures 4,567 psi (315 bar) P-A-B ports
- Tank pressures up to 2,300 psi (160 bar)
- Field serviceable coils both DIN and wire housing
- Pre-tested with 18 month warranty



Model Code Breakdown

NG6/D03 and NG10/D05 Directional Control Valve

NG6/NG10 Subplate Mounted Directional Valves

Operating Pressures 5,000 psi for P-A-B

Thank pressure up to 2,300 psi

NG6/D03 flows up to 21 gpm

NG10/D05 flows up to 32 gpm

WF	4	WE	10	J	4X	C	W110	N9	DAL				
Flow Paths 3 service ports = 3 4 service ports = 4												Mounting Face Alterations No code = No locating hole (standard) /60 = With locating hole /62 = With locating hole & pin	
Size Size NG6 = 6 ISO 4401-03-02-0-05, NFPA - D03 Size NG10 = 10 ISO 4401-05-04-0-05, NFPA - D05												Seals No code = BR seals (standard) V = FKM seals	
Spool Options Spool e.g. C, E, EA, EB, H, J, etc. ¹⁾ See Spool Symbols for options												Port Restrictions No code = Without orifice insert (standard) B08 = Orifice Ø 0.031 (0.8 mm) B10 = Orifice Ø 0.039 (1.0 mm) B12 = Orifice Ø 0.047 (1.2 mm) Applicable if flow exceeds performance limit of valve. Location designated by preceding alpha code. (B- in P port, H- in A port, R- in B port, N- A&B port, X- in T port).	
Series²⁾ NG6 Series 60 to 69 = 6X NG10 Series 30 to 39 (DIN conn.) = 3X Series 40 to 49 (wire housing conn.) = 4X												Electrical Connection Types Direct Solenoid Connections (DIN 24340 form A) K4 ³⁾ = Without angled plug but with cap Z45 = Angled plug Z45L = Angled plug with light Z55L = Large angled plug with light RZ55L = Large angled plug with rectifier & light Z55L1 = Plug w/ light & Zener surge suppression Central Solenoid Connections Wired Housing DA = Wire housing with cable gland DAL = Wire housing with cable gland & lights	
De-Energized Condition Spring return = No code Without spring return = O Detented; no spring return = OF												Solenoid Override N9 = With protected manual override (standard) N = Covered manual override, with rubber boot No code = Without manual override	
Solenoid Type High performance solenoid wet pin (oil-immersed) with removable coil Size NG6 = E Size NG10 = C													
Coil Voltage 12 V DC = G12 24 V DC = G24 96 V DC = G96 196 V DC = G196 110/120 V AC 50/60 Hz = W110 220/240 V AC 50/60 Hz = W220 96/196 V DC solenoid with built-in rectifier in angled plug, for connection to 110 V/220 V AC, frequency-independent (available with RZ55 DIN Connector) = W110R = W220R													

¹⁾ See spool configurations on following page

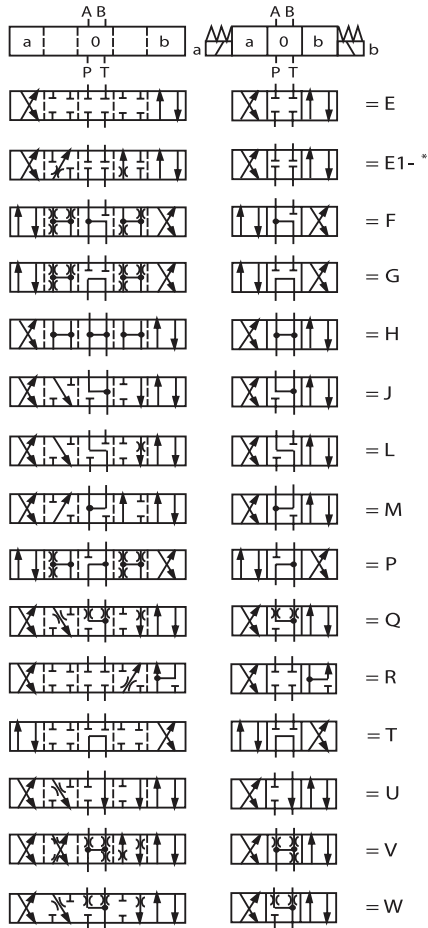
²⁾ Series externally interchangeable within the same decade (ie: 30-39)

³⁾ Appropriate DIN connectors included on FluidDyne valves

Symbols for Directional Control Valves

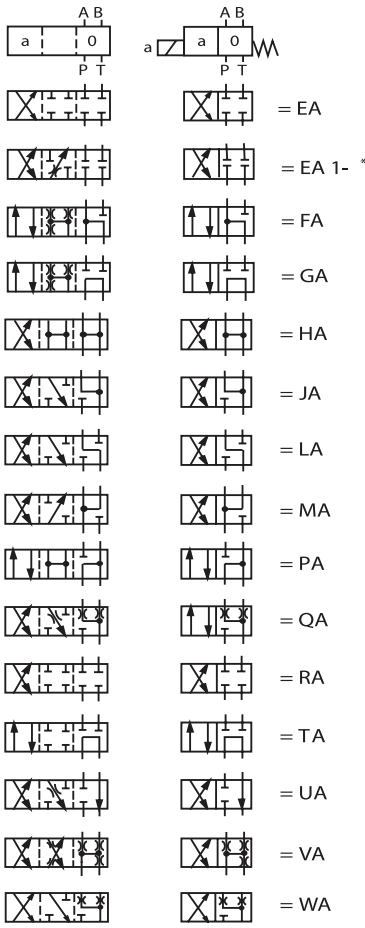
4 Way Valves; 2 and 3 Position

Double Solenoid 3-Position

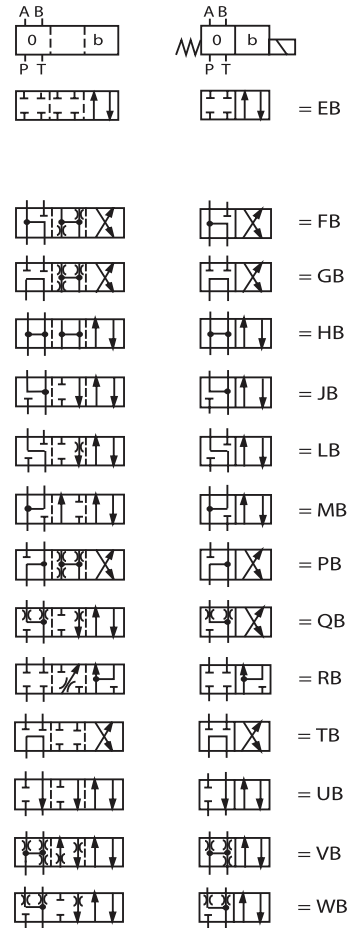


Single Solenoid 2-Position

Operator "A" Spring Center

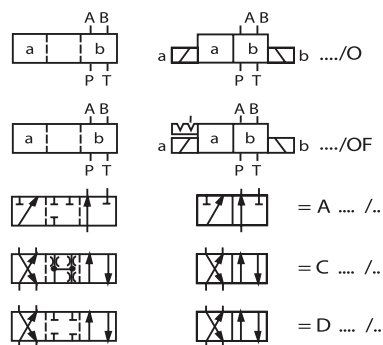


Operator "B" Spring Center



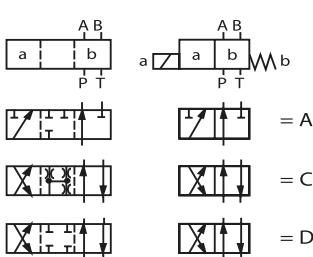
2 Position - 3 and 4 way valves

Double Solenoid

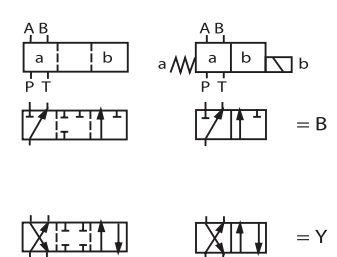


Single Solenoid

Operator "A" Spring Offset



Operator "B" Spring Offset



Additional Parts

NG6 (D03) PARTS

PART NUMBER	DESCRIPTION
SEAL KITS	
T86175	WF4WE6 SEAL KIT BUNA
T86176	WF4WE6 SEAL KIT VITON
DIN COILS	
T86137	COIL D03 DIN 4WE6 12 VDC
T86138	COIL D03 DIN 4WE6 24 VDC
T86245	COIL D03 DIN 4WE6 110R/(G96) VDC
T86246	COIL D03 DIN 4WE6 220R/(G196) VDC
T86140	COIL D03 DIN 4WE6 110 VAC
T86139	COIL D03 DIN 4WE6 220 VAC
WIRE HOUSING COILS	
T86144	COIL D03 4WE6 12 VDC WIRED "DAL"
T86145	COIL D03 4WE6 24 VDC WIRED "DAL"
T86159	COIL D03 4WE6 110 VAC WIRE "DAL"
T86235	COIL D03 4WE6 220 VAC WIRED "DAL"
AC/DC CORE TUBES	
T86140-1	D03 AC CORE TUBE 4WE6 W/KNOB
T86138-1	D03 DC CORE TUBE 4WE6 W/KNOB

NG10 (D05) PARTS

PART NUMBER	DESCRIPTION
SEAL KITS	
T86178	WF4WE10 SEAL KIT BUNA
T86179	WF4WE10 SEAL KIT VITON
DIN COILS	
T86122	COIL D05 DIN 4WE10 12 VDC
T86142	COIL D05 DIN 4WE10 24 VDC
T86243	COIL D05 DIN 4WE10 W110R/(G96) VDC
T86244	COIL D05 DIN 4WE10 W220R/(G196) VDC
T86143	COIL D05 DIN 4WE10 110 VAC
T86234	COIL D05 DIN 4WE10 220 VAC
COILS - FOR WIRED HOUSINGS	
T86151	COIL D05 4WE10 12 VDC WIRE "DAL"
T86150	COIL D05 4WE10 24 VDC WIRE "DAL"
T86154	COIL D05 4WE10 110 VAC WIRE "DAL"
T86234	COIL D054WE10 220 VAC WIRE "DAL"
T86118	COIL D05 4WE10 220VAC WIRED "DAL"
CORE TUBES & SPRINGS	
T86200	D05 AC CORE TUBE 4WE10 W/KNOB
T86201	D05 DC CORE TUBE 4WE10 W/KNOB
T86161	D05/4WE10 SPRING DC VOLTAGE
T86160	D05/4WE10 SPRING AC VOLTAGE

ELECTRICAL DIN CONNECTORS

PART NUMBER	DESCRIPTION
T86186	DIN CONNECTOR 24VDC VDR SURGE SUPPRESSOR
T86189	DIN CONNECTOR 24V AC/DC RECTIFIER + VDR SUPPRESSOR
T86147	DIN CONNECTOR 12/24 VDC W/LIGHT
T86141	DIN CONNECTOR 110/120 VAC W/LIGHT
T86241	DIN CONNECTOR W/RECTIFIER 110/120 VAC to 96 VDC
T86242	DIN CONNECTOR W/RECTIFIER 220/240 VAC to 196 VDC